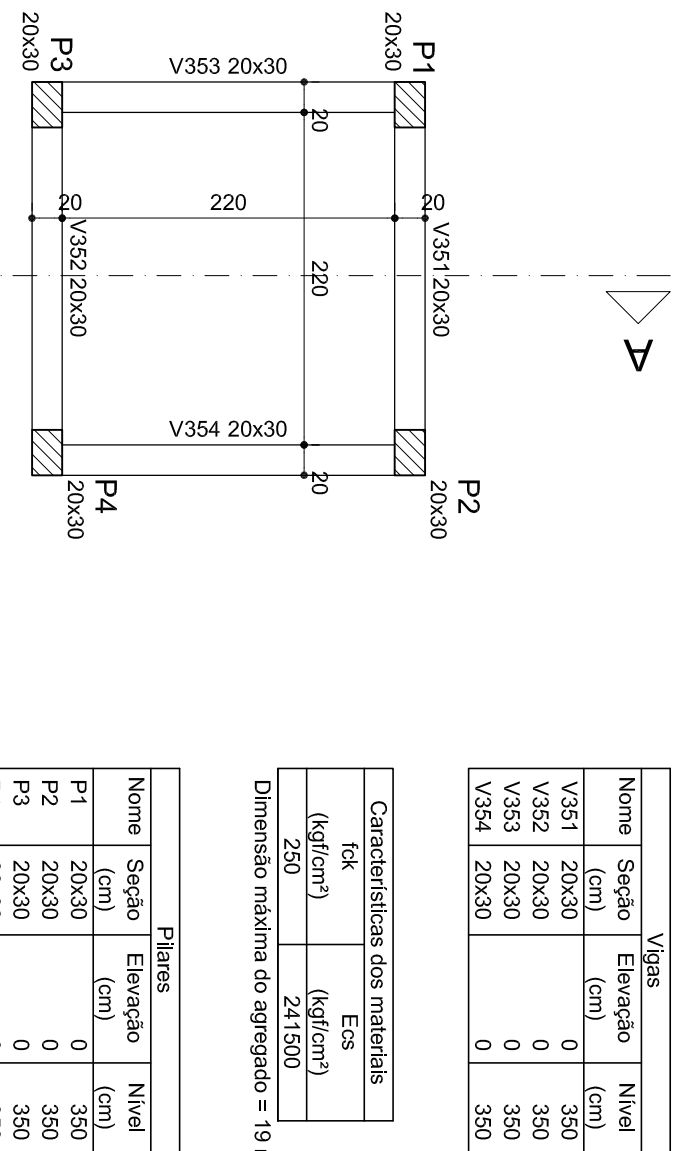
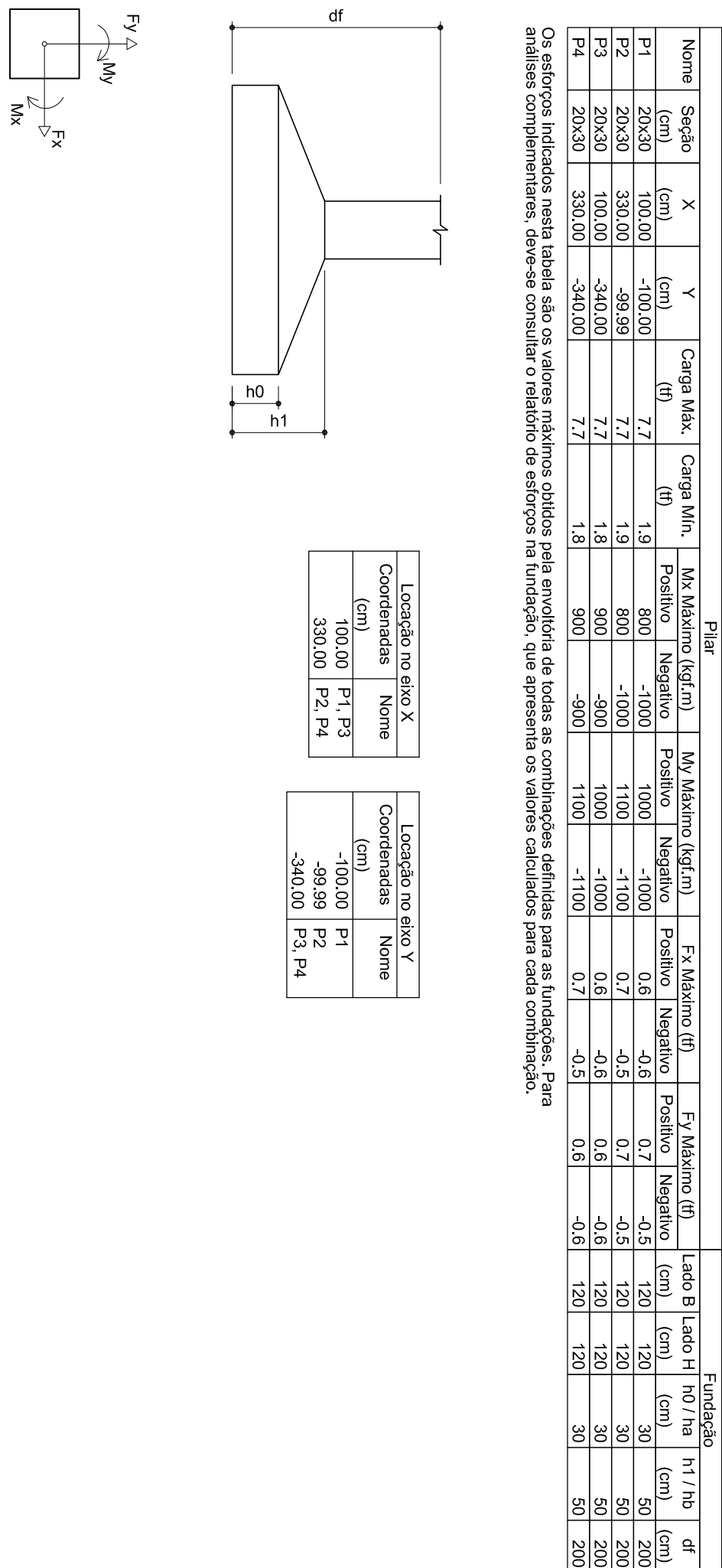
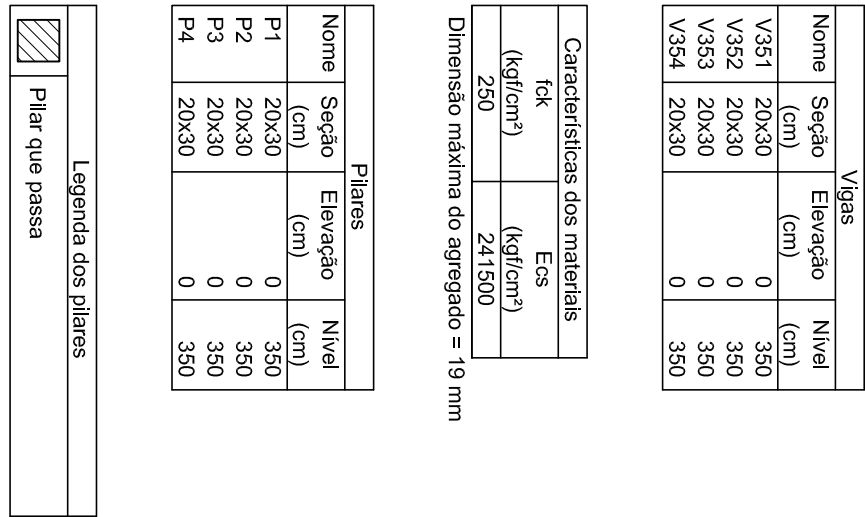



# Planta de locação

escala 1:50



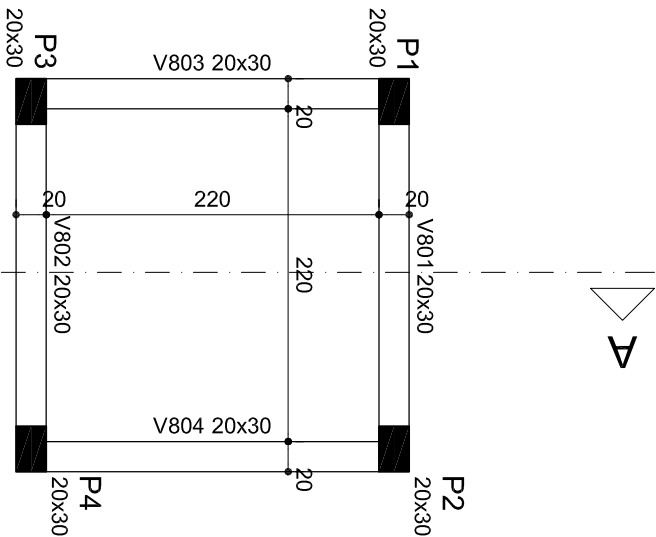
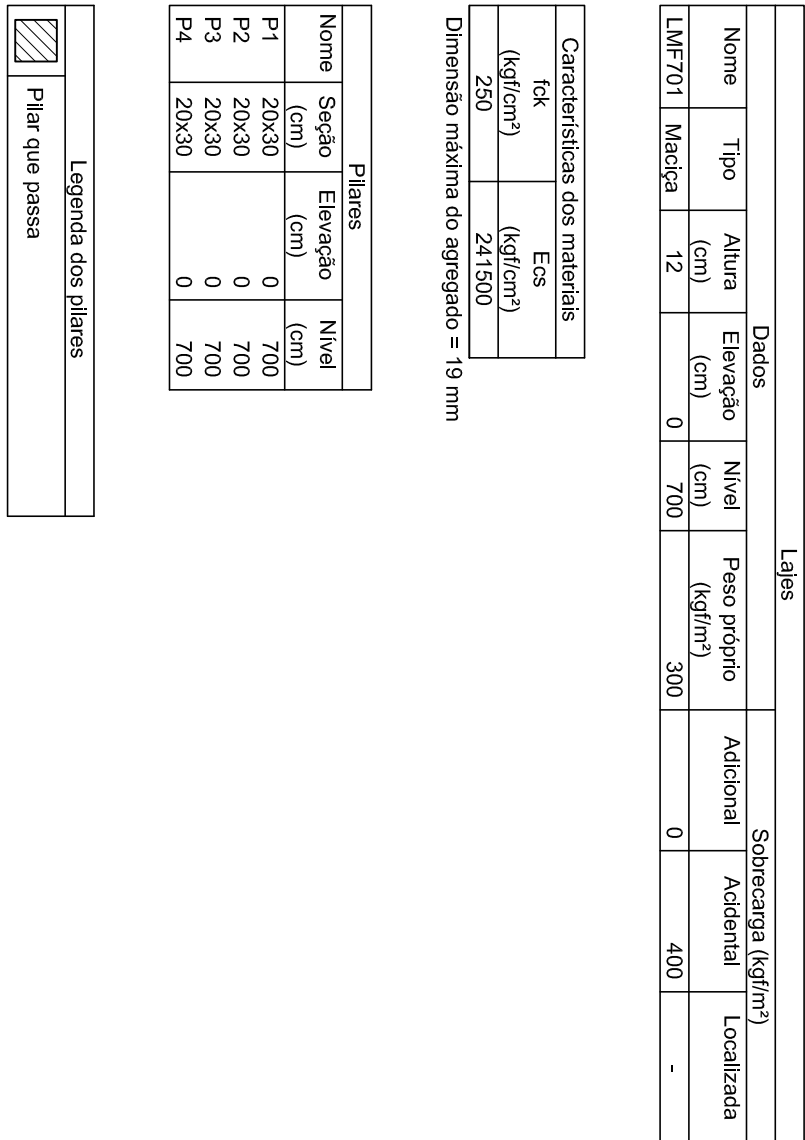
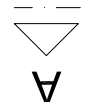
Forma do pavimento  
NÍVEL 350 (Nível 350)



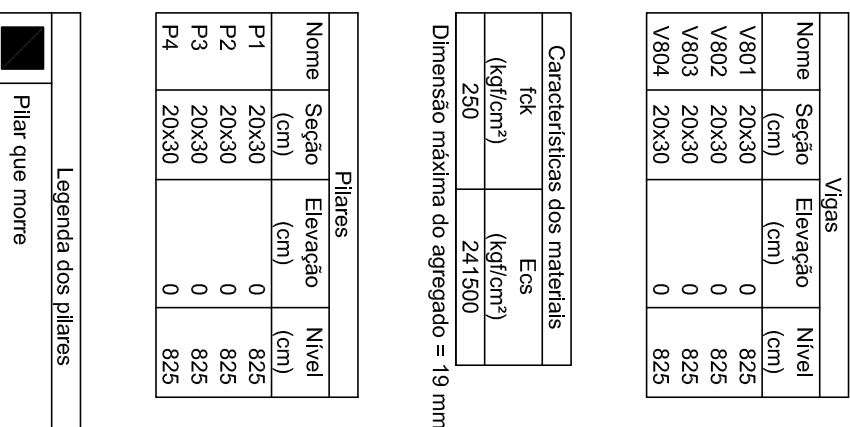
Legenda dos pilares	
	Pilar que passa



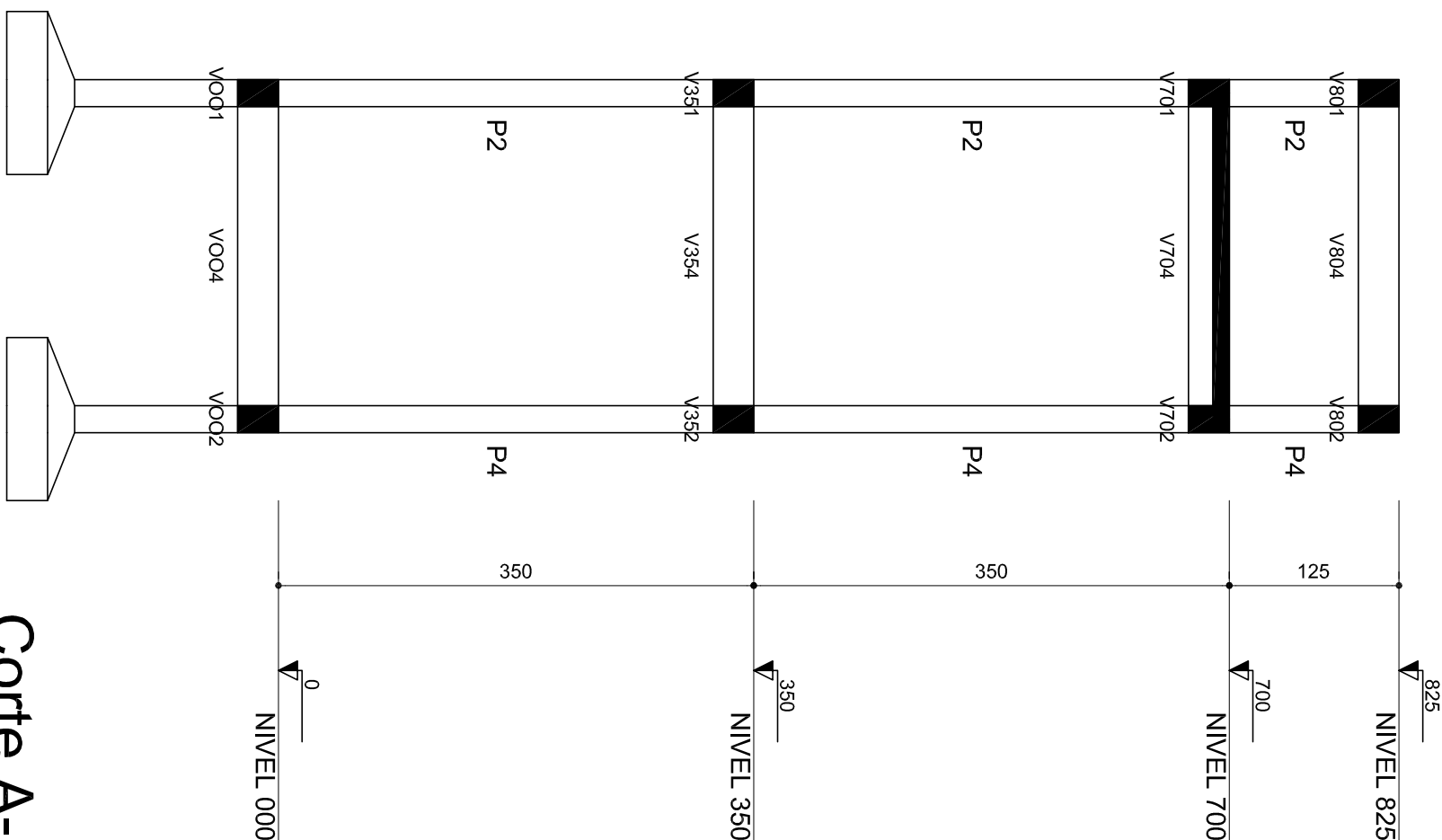
Forma do pavimento  
NÍVEL 700 (Nível 700)



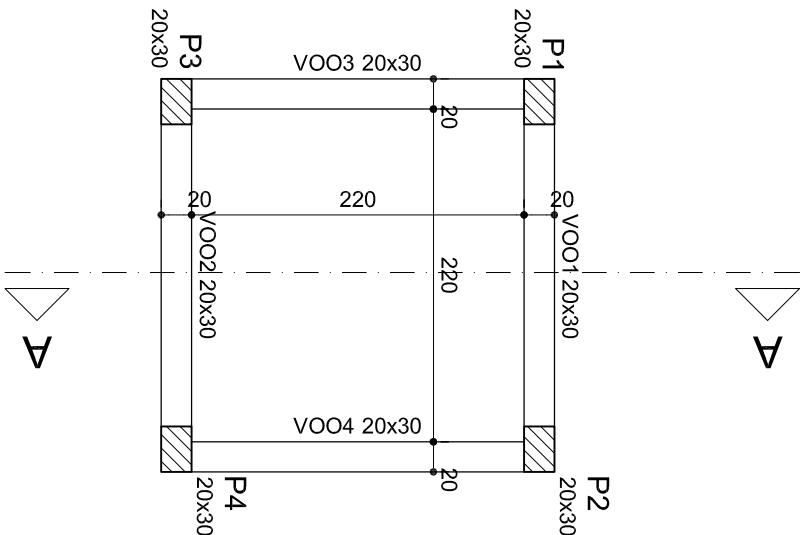
Forma do pavimento  
NIVEL 800 (Nível 825)  
escala 1:50



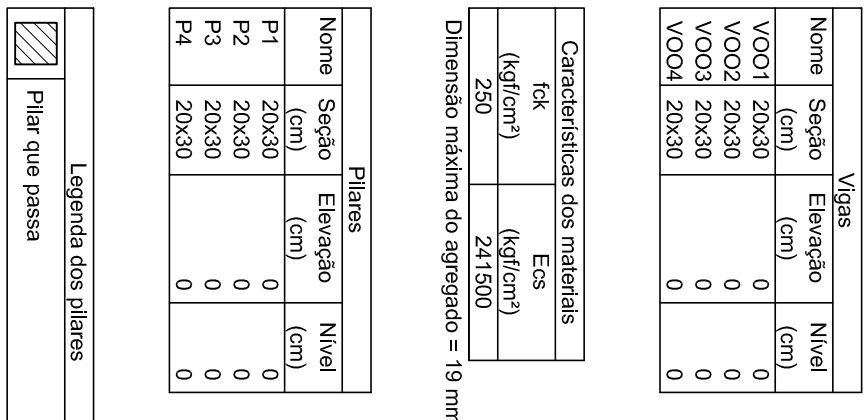
Legenda dos pilares	
	Pilar que morre



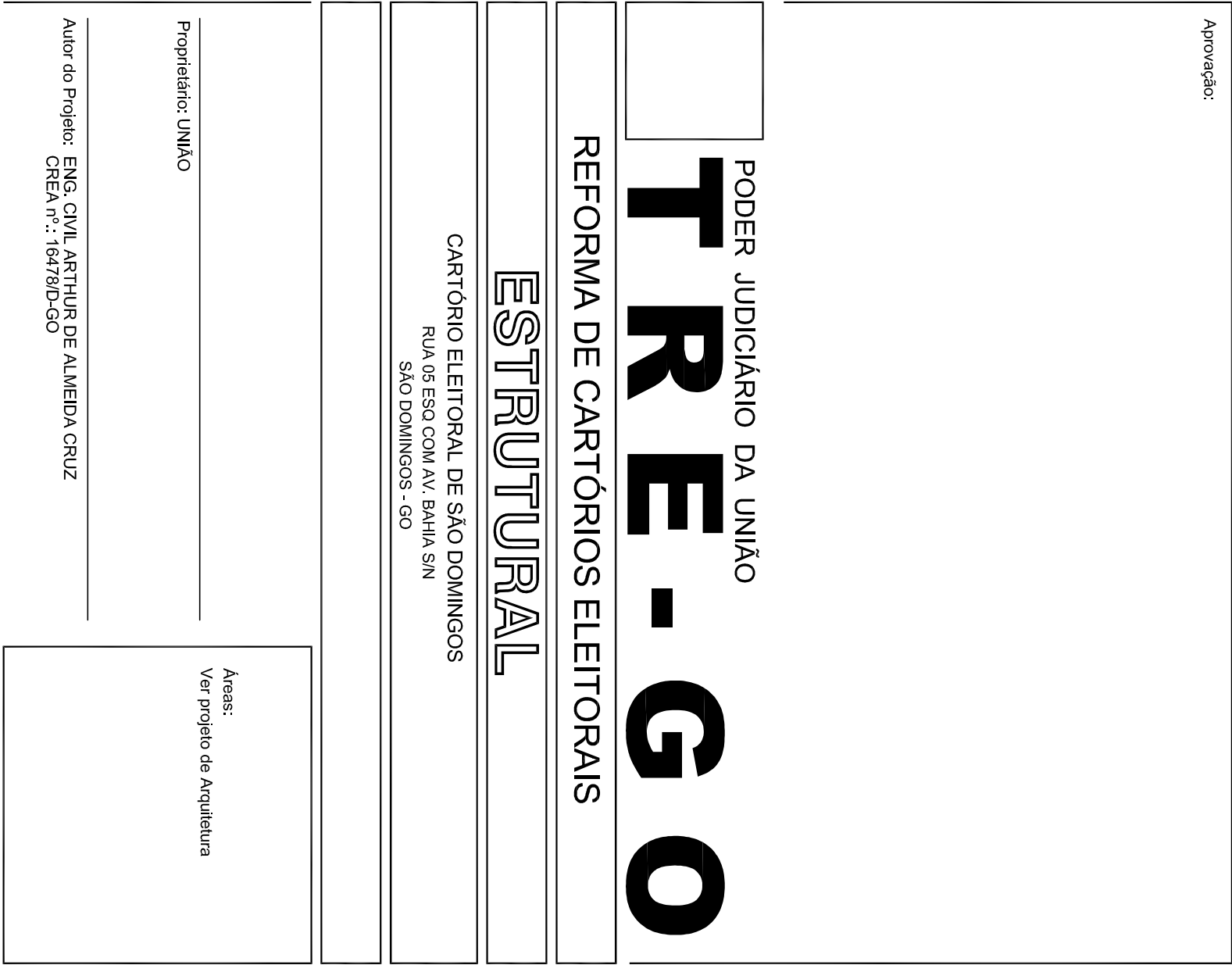
Corte A-A  
escala 1:50



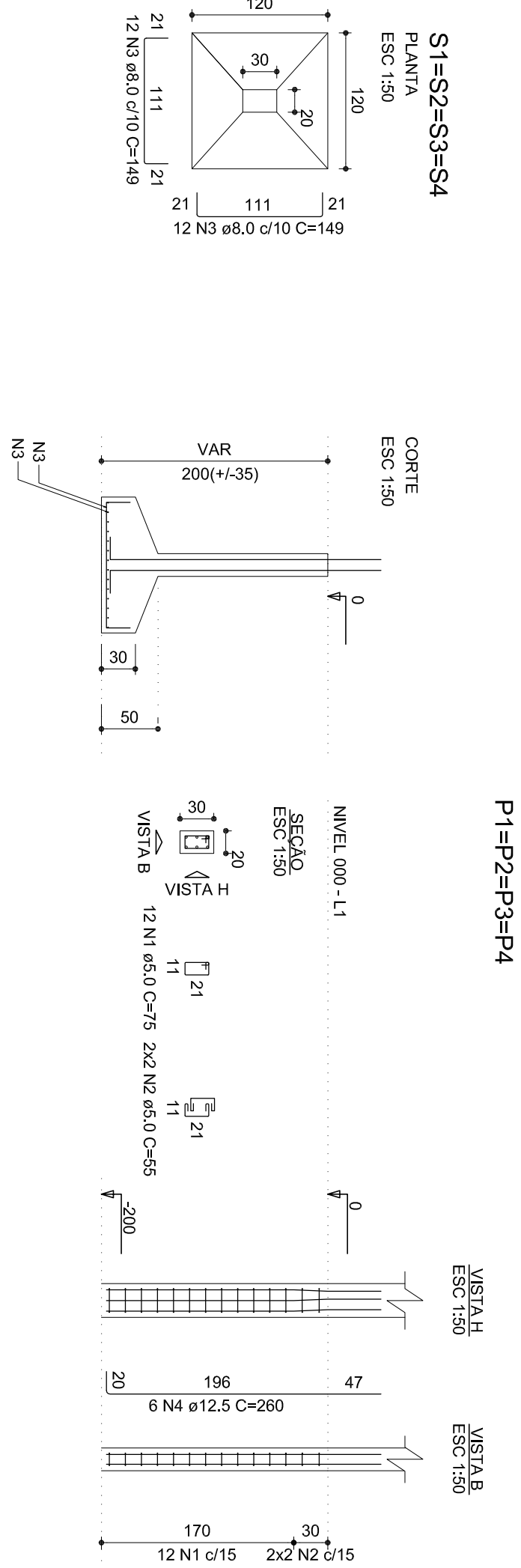
Forma do pavimento  
NIVEL 000 (Nível 0)



Legenda dos pilares	
	Pilar que passa



FUNDAÇÃO



P1=P2=P3=P4

4xP1 4xS1

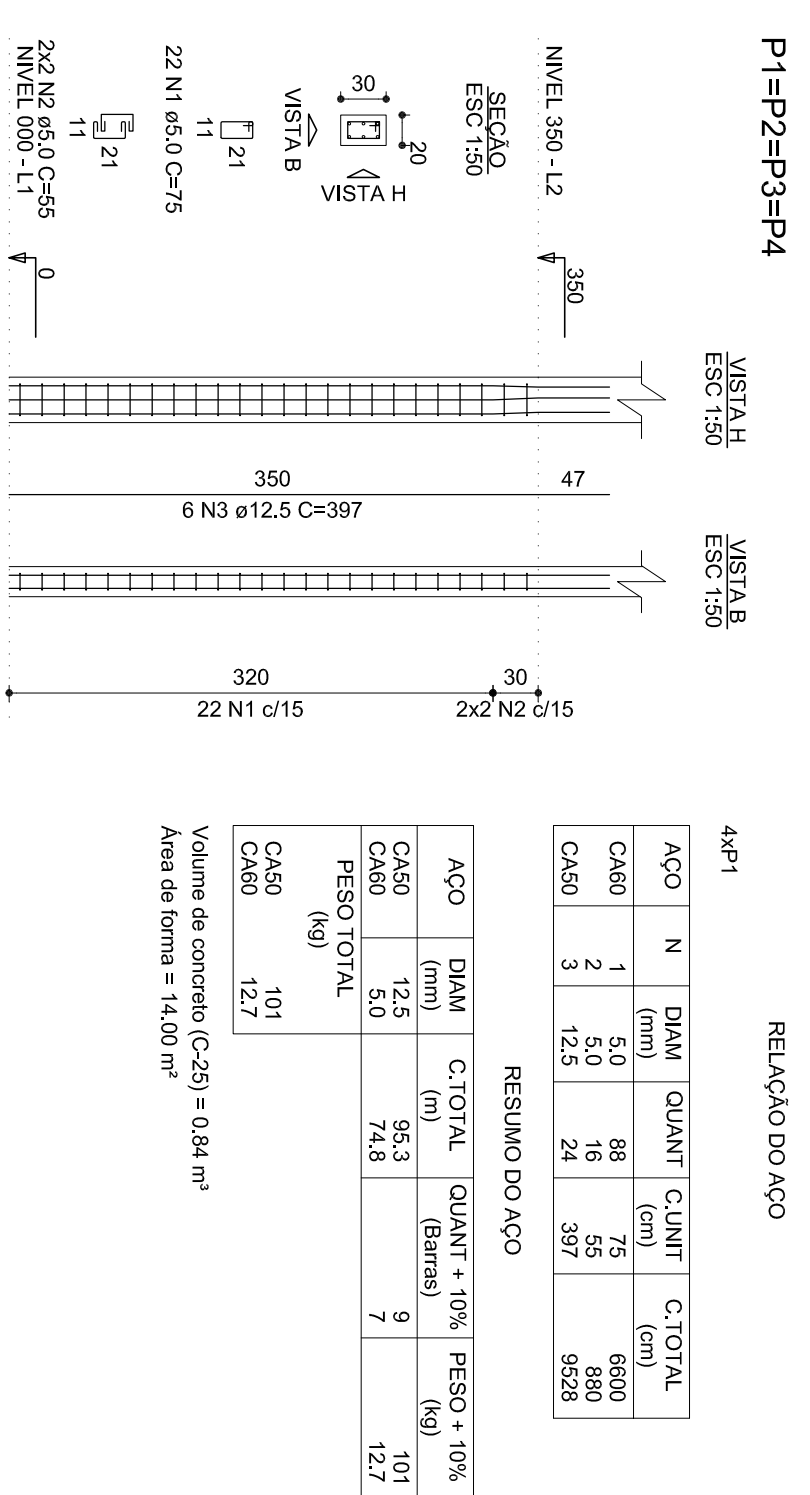
ACO	N	DIAM (mm)	QUANT	C.UNIT (cm)	C.UNIT (cm)	C.TOTAL (cm)
CA60	1	5,0	48	75	3600	3600
CA60	2	5,0	14	55	770	770
CA50	3	8,0	96	149	14304	14304
CA50	4	12,5	24	260	6240	6240

RESUMO DO AÇO

ACO	DIAM (mm)	C.TOTAL (m)	QUANT (Barras)	QUANT + 10% (kg)	PESO + 10% (kg)
CA50	8,0	62,4	14	62,1	62,1
CA50	12,5	44,8	5	7,6	7,6
PESO TOTAL (kg)					
CA50	128,2				
CA60	7,6				

Volume de concreto (C-25) = 2,57 m³  
Área de forma = 13,75 m²

PILARES NÍVEL 350



P1=P2=P3=P4

4xP1

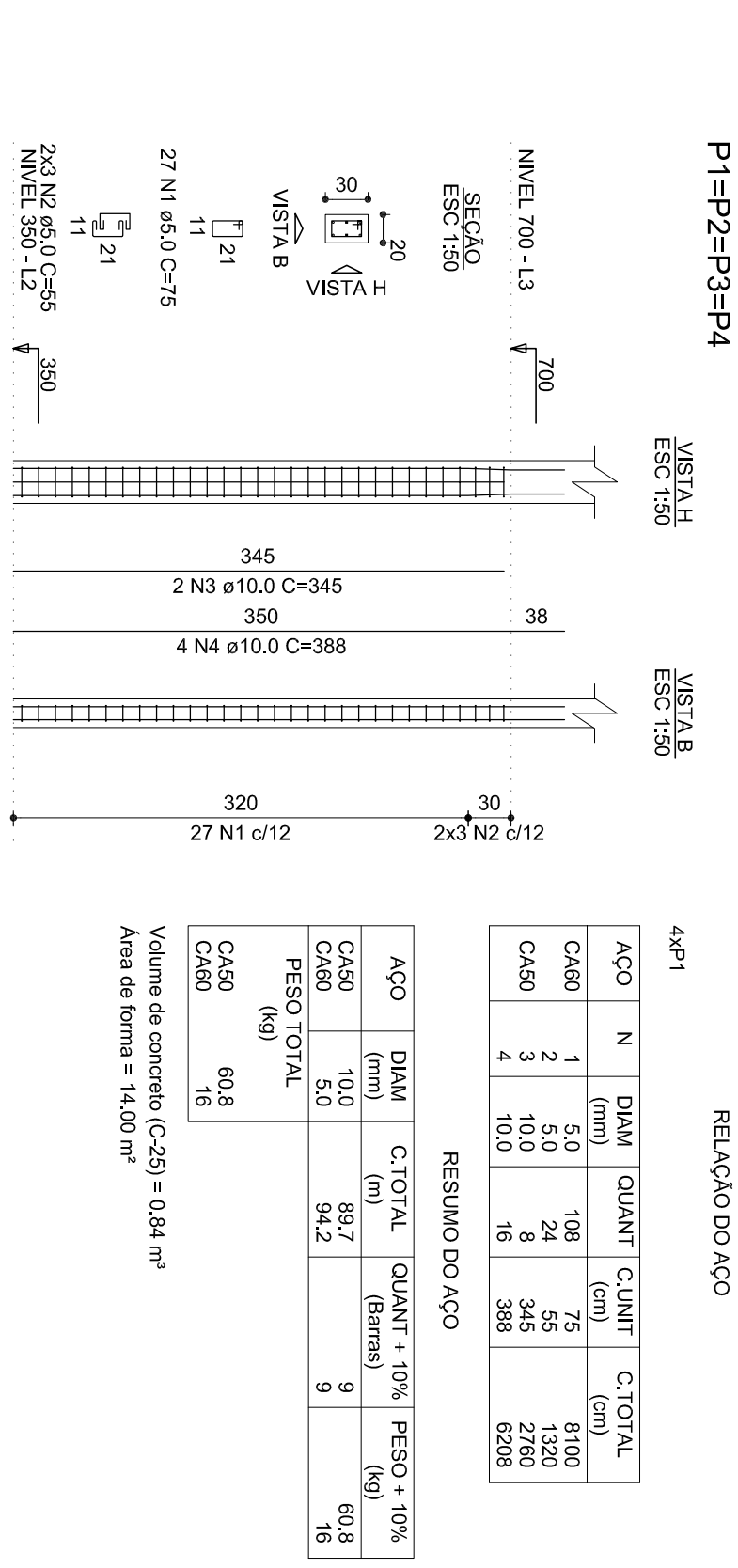
ACO	N	DIAM (mm)	QUANT	C.UNIT (cm)	C.UNIT (cm)	C.TOTAL (cm)
CA60	1	5,0	88	75	6600	6600
CA60	2	5,0	16	55	880	880
CA50	3	12,5	24	397	9528	9528

RESUMO DO AÇO

ACO	DIAM (mm)	C.TOTAL (m)	QUANT (Barras)	QUANT + 10% (kg)	PESO + 10% (kg)
CA50	12,5	95,3	9	101	101
PESO TOTAL (kg)					
CA50	101				
CA60	12,7				

Volume de concreto (C-25) = 0,34 m³  
Área de forma = 14,00 m²

PILARES NÍVEL 700



P1=P2=P3=P4

4xP1

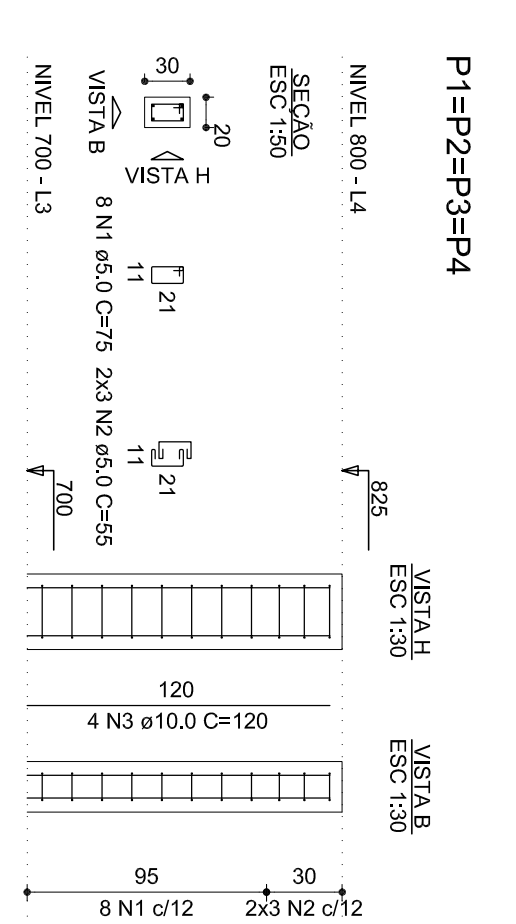
ACO	N	DIAM (mm)	QUANT	C.UNIT (cm)	C.UNIT (cm)	C.TOTAL (cm)
CA60	1	5,0	108	75	8100	8100
CA60	2	5,0	24	55	1320	1320
CA50	3	10,0	8	345	2760	2760
CA50	4	10,0	16	388	6208	6208

RESUMO DO AÇO

ACO	DIAM (mm)	C.TOTAL (m)	QUANT (Barras)	QUANT + 10% (kg)	PESO + 10% (kg)
CA50	5,0	68,7	9	67,8	67,8
CA60	5,0	54,2	9	67,8	67,8
PESO TOTAL (kg)					
CA50	60,8				
CA60	16				

Volume de concreto (C-25) = 0,54 m³  
Área de forma = 14,50 m²

PILARES NÍVEL 825



P1=P2=P3=P4

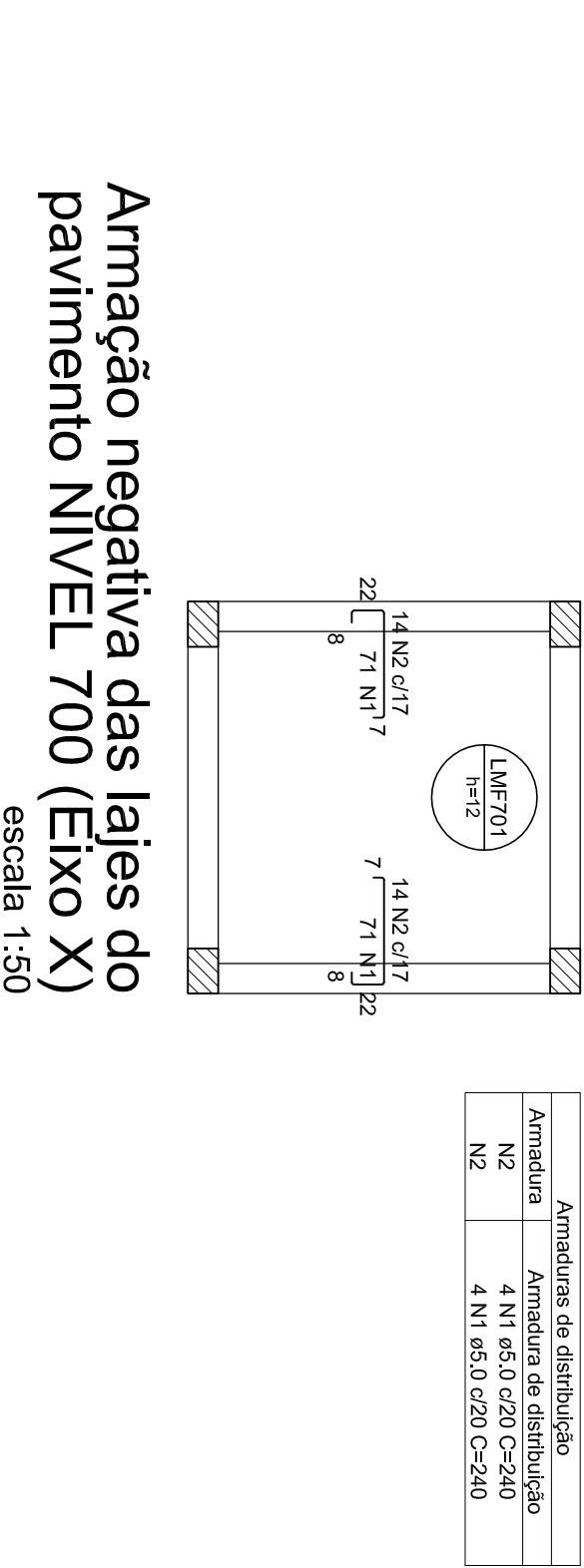
4xP1

ACO	N	DIAM (mm)	QUANT	C.UNIT (cm)	C.UNIT (cm)	C.TOTAL (cm)
CA60	1	5,0	32	75	2400	2400
CA60	2	5,0	24	55	1320	1320
CA50	3	10,0	16	120	1920	1920

RESUMO DO AÇO

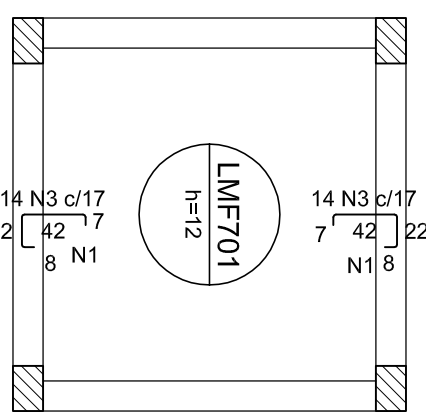
ACO	DIAM (mm)	C.TOTAL (m)	QUANT (Barras)	QUANT + 10% (kg)	PESO + 10% (kg)
CA50	10,0	19,2	2	13	13
CA60	5,0	37,2	4	6,3	6,3
PESO TOTAL (kg)					
CA50	13				
CA60	6,3				

Volume de concreto (C-25) = 0,30 m³  
Área de forma = 5,00 m²



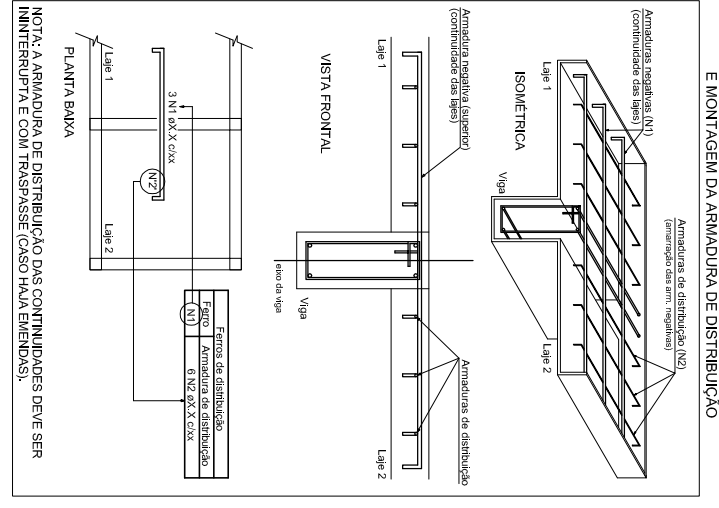
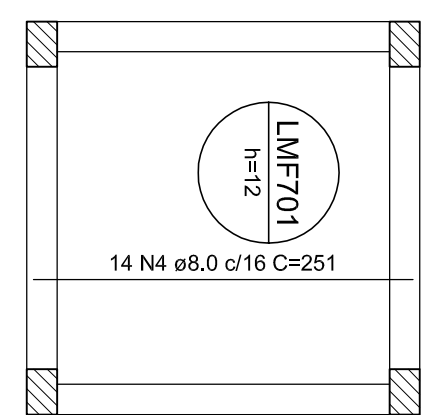
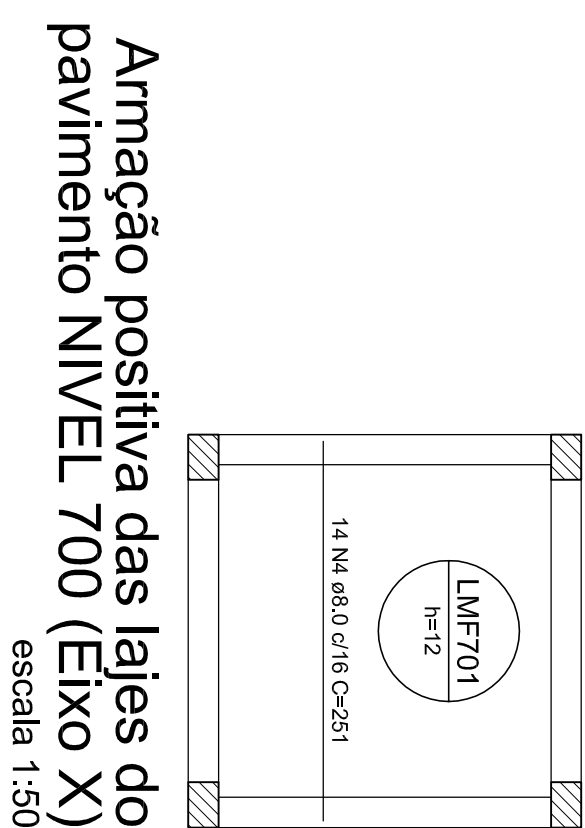
Armaduras de distribuição

Armadura	Armadura de distribuição
N2	4 N1 ø5,0 Ø20 C=240
N2	4 N1 ø5,0 Ø20 C=240



Armaduras de distribuição

Armadura	Armadura de distribuição
N3	3 N1 ø5,0 Ø20 C=240
N3	3 N1 ø5,0 Ø20 C=240



RELACIONAMENTO DO AÇO

ACO	N	DIAM (mm)	QUANT	C.UNIT (cm)	C.UNIT (cm)	C.TOTAL (cm)
CA60	1	5,0	14	240	3360	3360
CA60	2	6,3	28	104	2912	2912
CA50	3	8,0	28	251	7028	7028

RESUMO DO AÇO

ACO	DIAM (mm)	C.TOTAL (m)	QUANT (Barras)	QUANT + 10% (kg)	PESO + 10% (kg)
CA50	6,3	50,1	5	13,5	13,5
CA60	8,0	70,3	7	30,5	30,5
PESO TOTAL (kg)					
CA50	44				
CA60	5,7				

Volume de concreto (C-25) = 0,59 m³  
Área de forma = 4,89 m²  
• Colamento de 3cm para a fôrma em tijos

PODER JUDICIÁRIO DA UNIÃO

REFORMA DE CARTÓRIOS ELEITORAIS

ESTRUTURAL

CARTÓRIO ELEITORAL DE SÃO DOMINGOS

RUA 05 ESO COM AV. BAHIA SN

SÃO DOMINGOS - GO

PROPRIETÁRIO: UNIAO

Autor do Projeto: ENG. CIVIL, ARTHUR DE ALMEIDA CRUZ

CREA nº.: 164790-D-00

Assessor:

Ver projeto de Arquitetura

Consultor:

FUNDACÃO - SAPATAS

PILARES

LAJE MACIÇA

Escalor: Indicada

Data: MAIO/2022

Desenho: Arthur

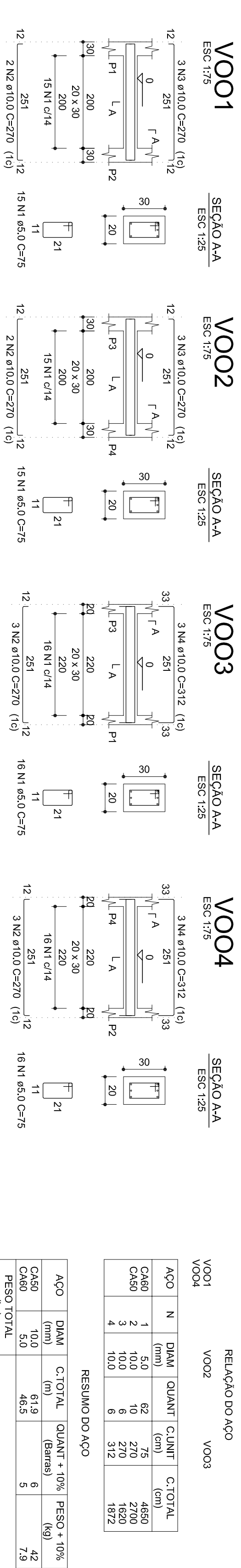
Revisão: rev00

Parcial:

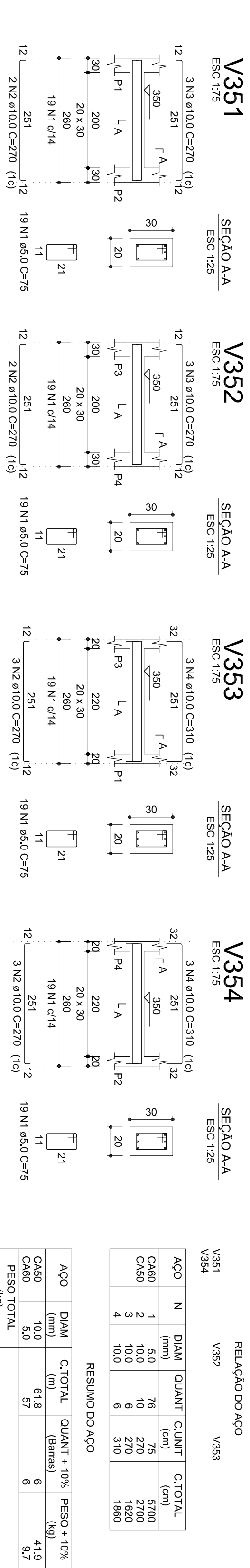
02/03

EST

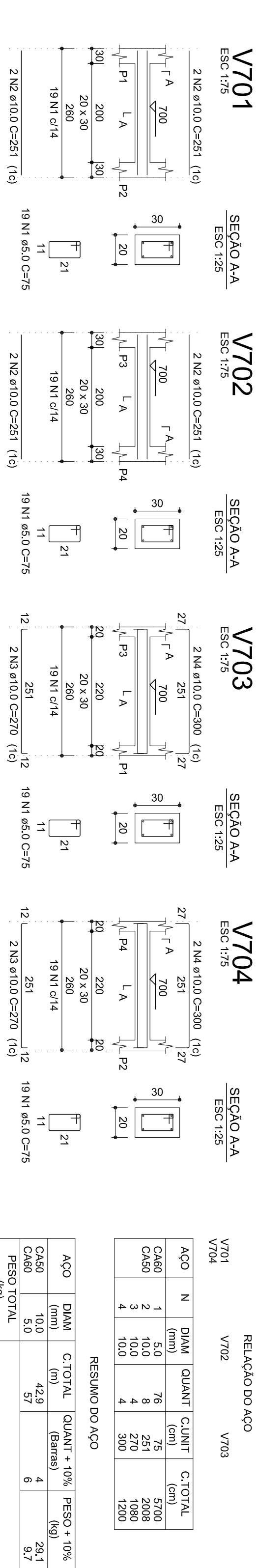
VIGAS NÍVEL 000 - FUNDAÇÃO



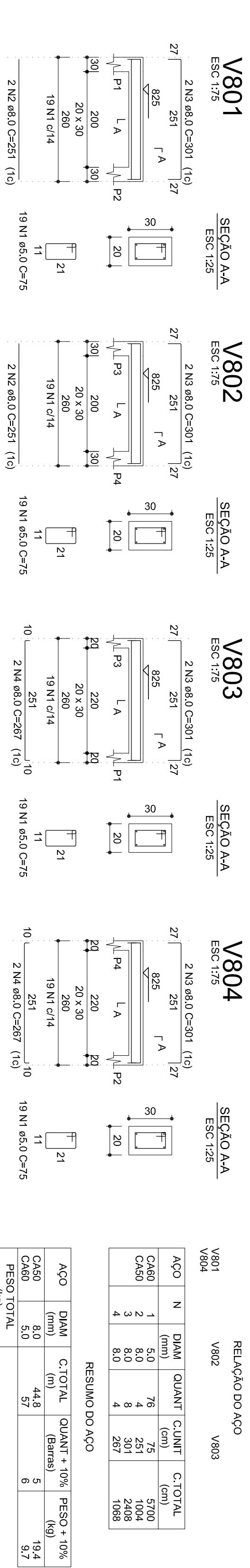
VIGAS NÍVEL 350



VIGAS NÍVEL 700



VIGAS NÍVEL 825



PODER JUDICIÁRIO DA UNIÃO

REFORMA DE CARTÓRIOS ELEITORAIS

ESTRUTURAL

CARTÓRIO ELEITORAL DE SÃO DOMINGOS

RUA 05 ESO COM AV. BAHIA SIN

SÃO DOMINGOS - GO

PROPRIETÁRIO: UNIAO

Autor do Projeto: ENG. CIVIL, ARTHUR DE ALMEIDA CRUZ

CREA n.º: 164790-00

Assinatura: \_\_\_\_\_

Assinatura: \_\_\_\_\_

Assinatura: \_\_\_\_\_

Comissão: VIGAS

Parâmetro: 03/03